



RemoteLink™ 20

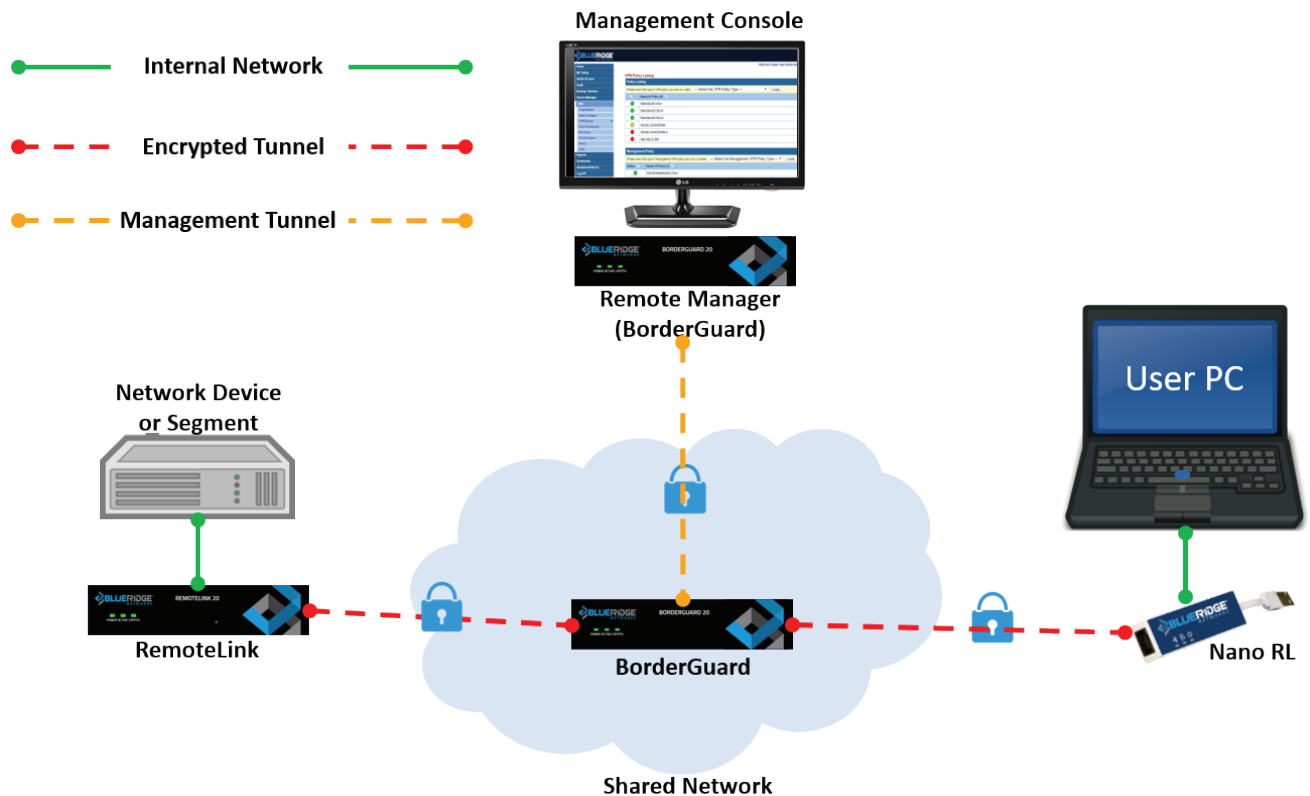
RemoteLink 20 (RemoteLink) is a plug-and-play secure-edge gateway module that enables peer-to-peer encrypted and multi-point connectivity for systems and devices anywhere in the world.



It protects communications conduits and securely segments your network into isolated zones and protects any type of endpoint or network of endpoints.

How It Works

Security Policies, defined using the Management System, are delivered to each security device. Once the BorderGuard and RemoteLink have completed mandatory authentication, between each other, secure tunnels are established based on the security policies. The encrypted tunnel allows the network segment behind a BorderGuard to access/communicate with the network segment behind the RemoteLink. Devices or segments internal to the protected network cannot reach out to the internet and internet devices cannot reach in. Devices see nothing except other internal devices.



RemoteLink™ 20

Specifications

Encryption Algorithms

- AES-CBC-128
- AES-CBC-256
- AES-GCM-128
- AES-GCM-256

Data Integrity

- HMAC-SHA-256

VLAN Support

- IEEE 802.1Q
- IEEE 802.1ad

Public Key Cryptography

- RSA and Diffie-Hellman
- 1024-, 2048-, 4096-bit RSA keys

Physical Dimensions

- Height: 1.2"/30.48 mm
- Width: 6.6"/167.64 mm
- Depth: 6.2"/157.48 mm
- Weight: 0.9 lbs/.41 kg

Interfaces

- 3 - GbE ports
- 2 - USB 2.0 ports

Power Requirements

- 12V 2A Inline AC adapter

Operating Environment

- Temperature 32°F to 104°F (0° to 40° C)
- Humidity 0% to 90% @ 40°C (non-condensing)

Maximum AES Throughput

- 300 Mbps

Concurrent Tunnels

- 2

